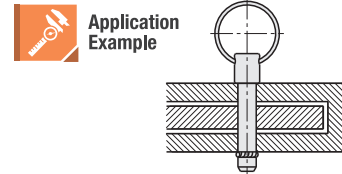
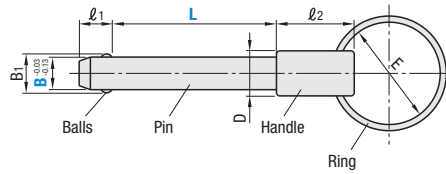


Ball Lock Pins

Spring / Push Pin



Type		Ball		Pin		Handle		Ring	
L Selectable	L Dimension Configurable	Material	Hardness	Material	Surface Treatment	Material	Surface Treatment	Material	Surface Treatment
BLPS	BLPF	440C Stainless Steel	HRC 55 min.	1045 Carbon Steel or Equivalent	Electroless Nickel Plating	1213 Carbon Steel	Electroless Nickel Plating	JIS-SWRH Carbon Steel	Nickel Plating



Selectable L-Dimension

Part Number		L Selection				B ₁	ℓ ₁	D	ℓ ₂	E
Type	B									
BLPS	5	30				5.5	6	11	22	25
	6	25	30	40	50	7	7	11	22	25
	8	25	30	40	50	9.5	8	11	22	25
	10	25	30	40	50	12	9	16	27	25
	12					14.5	10	16	27	25
	16					19	14	19	32	25

Configurable L-Dimension

Part Number		L Selection				B ₁	ℓ ₁	D	ℓ ₂	E
Type	B	5mm Increment								
BLPF	5	10-30				5.5	6	11	22	25
	6	15-50				7	7	11	22	25
	8	20-100				9.5	8	11	22	25
	10	25-100				12	9	16	27	25
	12	30-100				14.5	10	16	27	25
	16	50-100				19	14	19	32	25



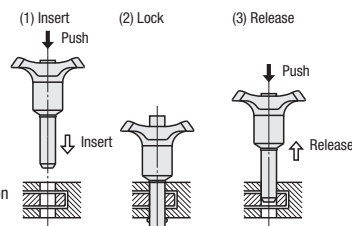
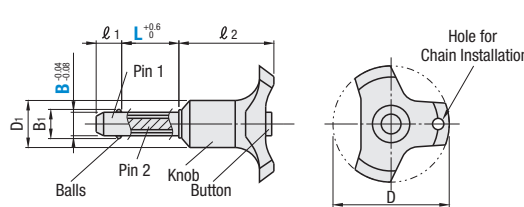
Part Number Example

Part Number	L
BLPS8	25
BLPF10	45

B	Mating Hole Recommended Dim.	Resistance when Removed (N)	Pin Fracture Load (kN)	Mass (g)
5	5 ^{+0.07} ₀	9	5	19-22
6	6 ^{+0.07} ₀	9	7	21-28
8	8 ^{+0.09} ₀	9	13	27-58
10	10 ^{+0.09} ₀	20	20	59-105
12	12 ^{+0.11} ₀	30	29	73-135
16	16 ^{+0.11} ₀	50	51	159-237



Type	Ball		Pin 1	Pin 2	Spring	Knob
	Material	Hardness	Material	Material	Material	Material
BLP	440C Stainless Steel	55 HRC min.	630 Stainless Steel Equivalent	303 Stainless Steel	631 Stainless Steel	Nylon 6 (Black / Orange)



- (1) When the button is pushed, the ball lock is released. The pin can be inserted into a hole as the balls are retracted inside the pin.
- (2) When the button is released, the pin is locked as the balls extend outward from the pin.
- (3) When the button is pushed again, the ball lock is released and the pin is pulled out.

Part Number		L Selection						D	D ₁	B ₁	ℓ ₁	ℓ ₂	Mating Hole Recommended Dimensions	Shear Load (kN)	Mass (g)	
Type	B															
BLP	5	10	15	20	25	30	38	16	5.5	6	31.5	5 ^{+0.07} ₀	11	30-32		
	6	10	15	20	25	30						40	50	6 ^{+0.07} ₀	17	31-39
	8	20		25	30	40						50	8 ^{+0.09} ₀	34	38-47	
	10	25		30	40	50	60	12	9	10 ^{+0.09} ₀	56	76-97				
	12	40		50	60	80	100	43	23	14.5	10	36	12 ^{+0.11} ₀	78	100-135	
	16	60		80	100	19							14	16 ^{+0.11} ₀	138	171-232



Part Number Example

Part Number	L
BLP8	25